

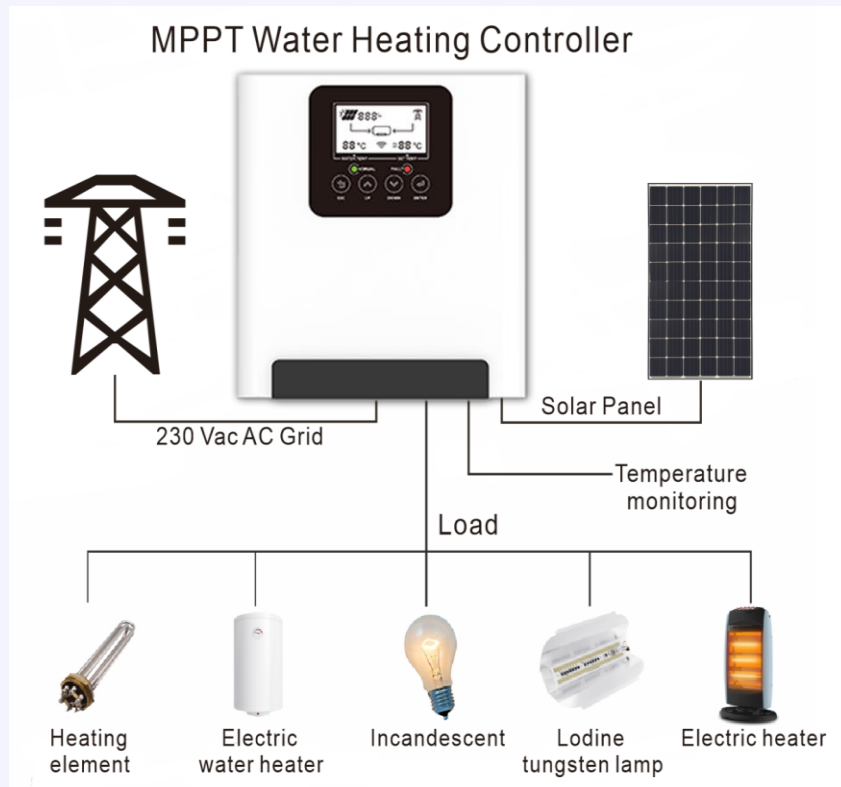


4KW Solar Water Heating Controller

— Save energy and money, and use hot water with confidence

Product description

The solar water heating controller can be connected to an electric water heater or a resistive load. If you already have a water heater at home, the original heating element can be connected directly without replacement.



The 4KW solar water heater controller uses MPPT technology to provide the electric energy generated by the solar panel to the heating element with maximum efficiency. It converts photovoltaic DC power into square wave AC power, which can be directly connected to a traditional public water heater.

The controller has an intelligent control function. When the solar output power is low, it will automatically switch to AC to ensure that the water temperature of the hot water tank reaches the required temperature.

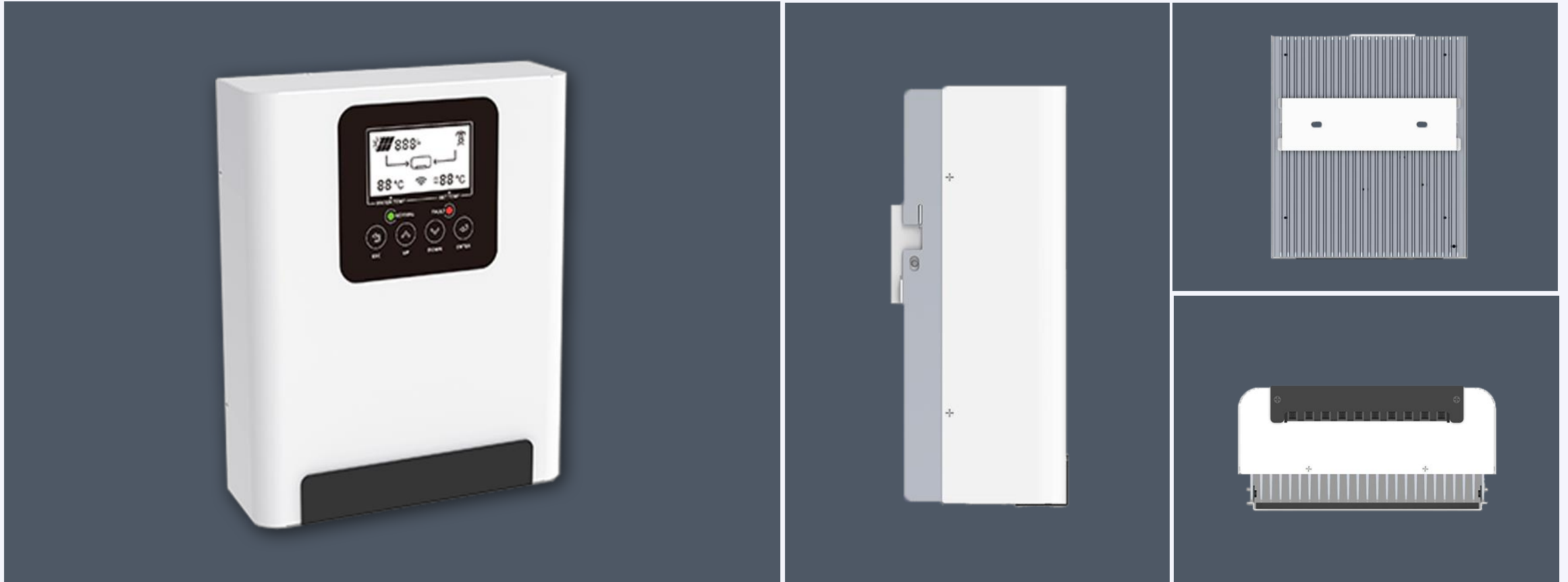
Parameter introduction

Feature:

- Photovoltaic power generation, low consumption and work at low temperature.
- Smart switching DC/AC control to save your electricity bill cost.
- MPPT controller technology, 99% efficiency maximum the solar power harvest and convert to heating.
- Wide range PV voltage input 160Vdc-420Vdc.
- Built-in advanced DSP control chip, smart control.
- WIFI monitoring and remote setting (Optional).
- Easy installation, maintenance and commissioning.

Rated power	4000W
Scope of application	The MPPT solar heating controller is only suitable for heating resistance loads through solar energy, and this controller can only be used for connecting resistance equipment or AC water heaters with a heating power of 420V/4000W.
Photovoltaic characteristics	
Solar Max. input power	4000 W
Solar input current	≤ 20 A
Solar input voltage range	160 Vdc~420 Vdc
MPPT operating voltage range	120 Vdc~370 Vdc
MPPT efficiency	>99%
Solar heating output voltage range	0~260 Vac
Solar heating output current range	≤ 20 A
AC characteristics	
AC heating rated power(bypass)	4000 W
AC rated voltage	230 Vac
AC working voltage range	180 Vac~260 Vac
AC rated current	≤20 A
Load requirement	
Load	It can be connected to 230Vac/4000W PTC resistance heating element.
Machine characteristics	
Machine dimensions	195*183*100 mm
Package dimensions	290*250*120 mm
Net weight	2 Kg
Gross weight	2.8 Kg

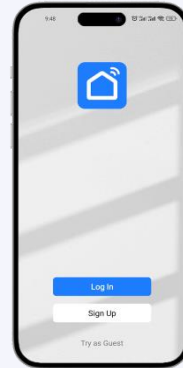
Product display



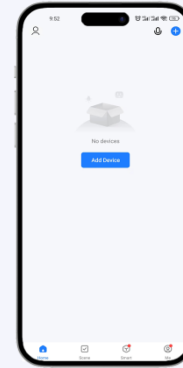
Steps to configure the APP



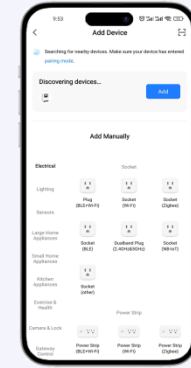
1. Download in mobile application: "Smart life" or direct code scanning



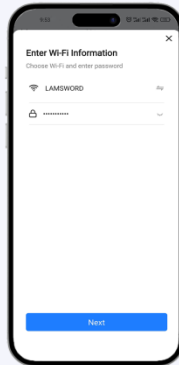
2. Register a personal account via email



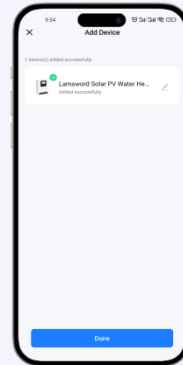
3. Add Device



4. Make sure Bluetooth and wifi are turned on, and connected to a 2.4GHz WiFi network



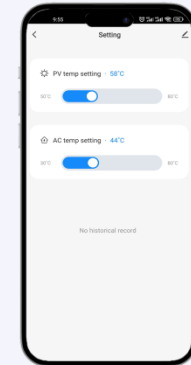
5. Enter your home WiFi account and password



6. Click done and modify the name and account freely

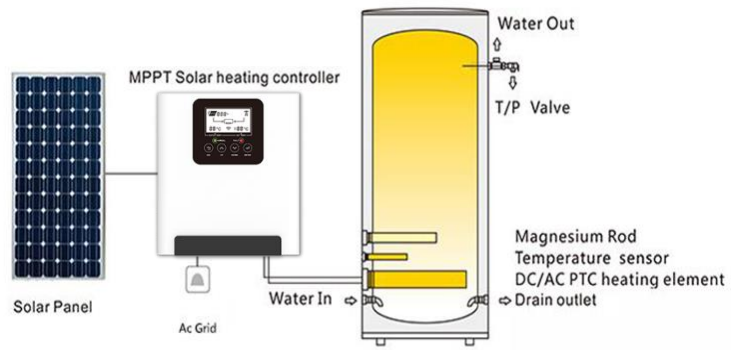


7. After waiting for the data to be updated, the interface information displays normally and the connection is successful

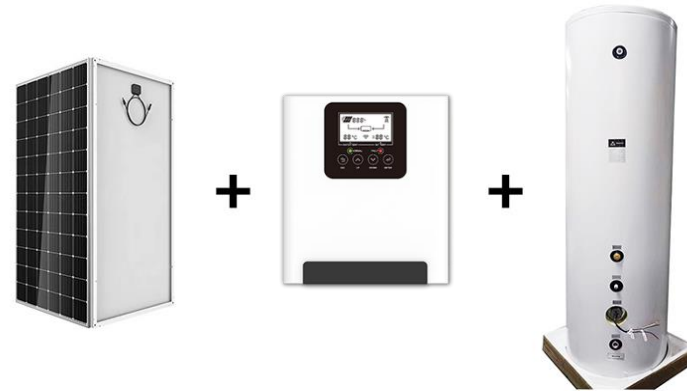


8. Temperature setting interface, you can set the heating temperature of AC/PV

Application scenarios



Application diagram



Solar water heater system composition



Site installation

Thank You